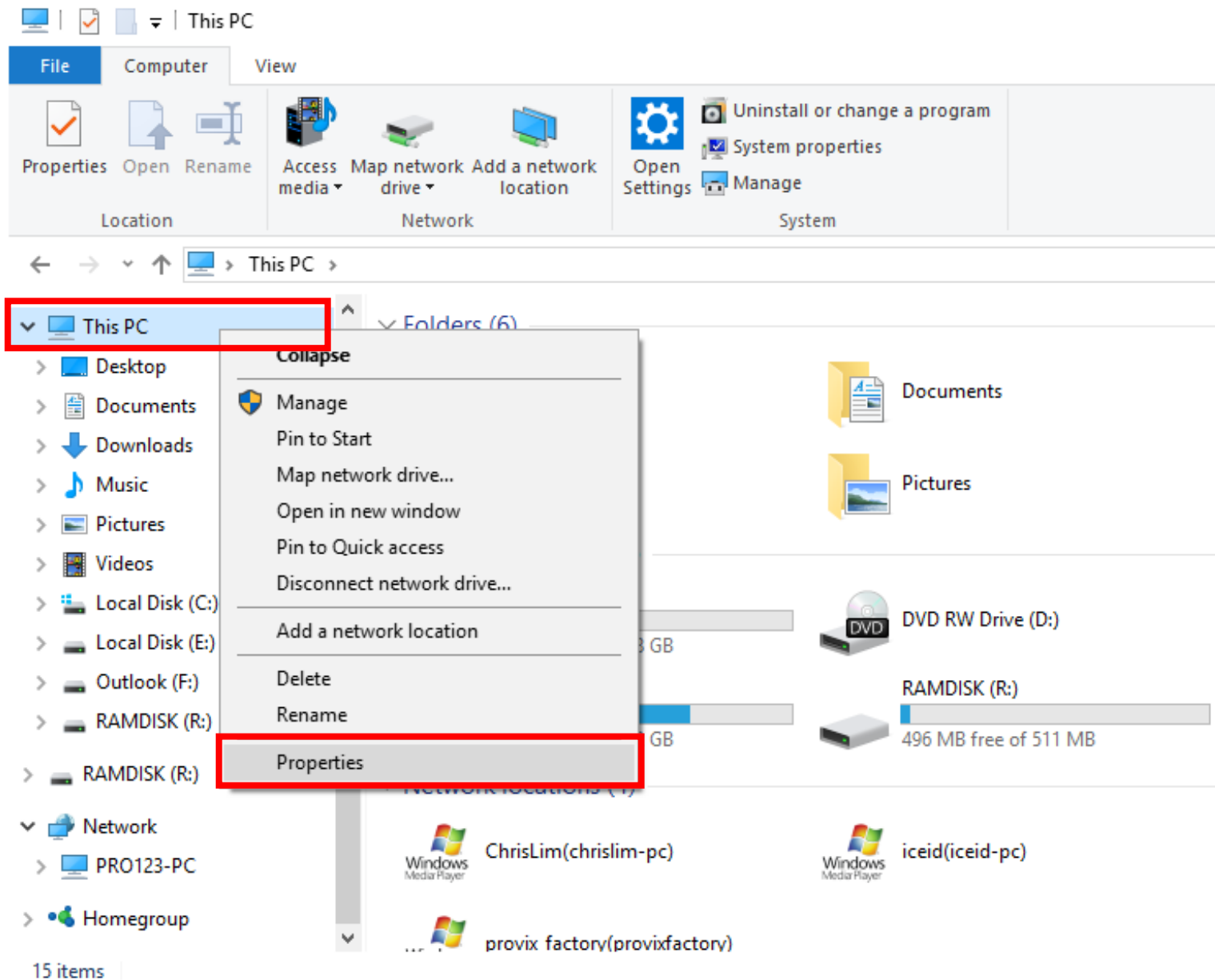


PCCam

Portascope.com



How to search or change the NTSC & PAL type
for using the UBCAM_Pro software program



[Procedure]

1. Connect your device to your computer or laptop
2. Do the right-click the 'This PC'
3. Find the Properties and click it

System

Control Panel > System and Security > System

Control Panel Home

- Device Manager**
- Remote settings
- System protection
- Advanced system settings

View basic information about your computer

Windows edition

Windows 10 Pro

© 2017 Microsoft Corporation. All rights reserved.

System

Processor:	Intel(R) Core(TM) i5-6200U CPU @ 2.30GHz 2.40 GHz
Installed memory (RAM):	8.00 GB
System type:	64-bit Operating System, x64-based processor
Pen and Touch:	No Pen or Touch Input is available for this Display

Computer name, domain, and workgroup settings

Computer name:	DESKTOP-AJVIARB
Full computer name:	DESKTOP-AJVIARB
Computer description:	
Workgroup:	WORKGROUP

Windows activation

Windows is activated [Read the Microsoft Software License Terms](#)

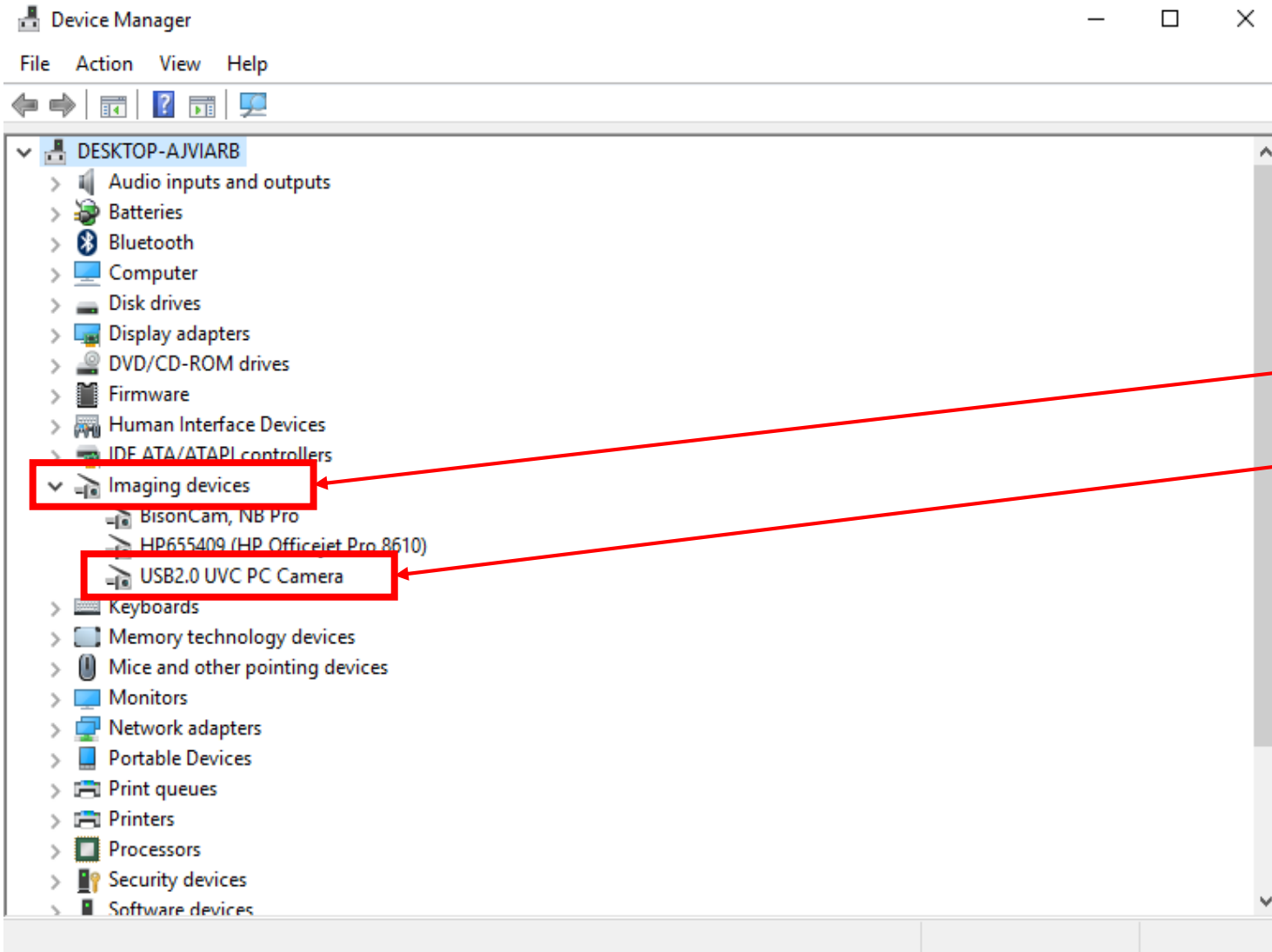
Product ID: 00331-10000-00001-AA222

See also

Security and Maintenance

[Procedure]

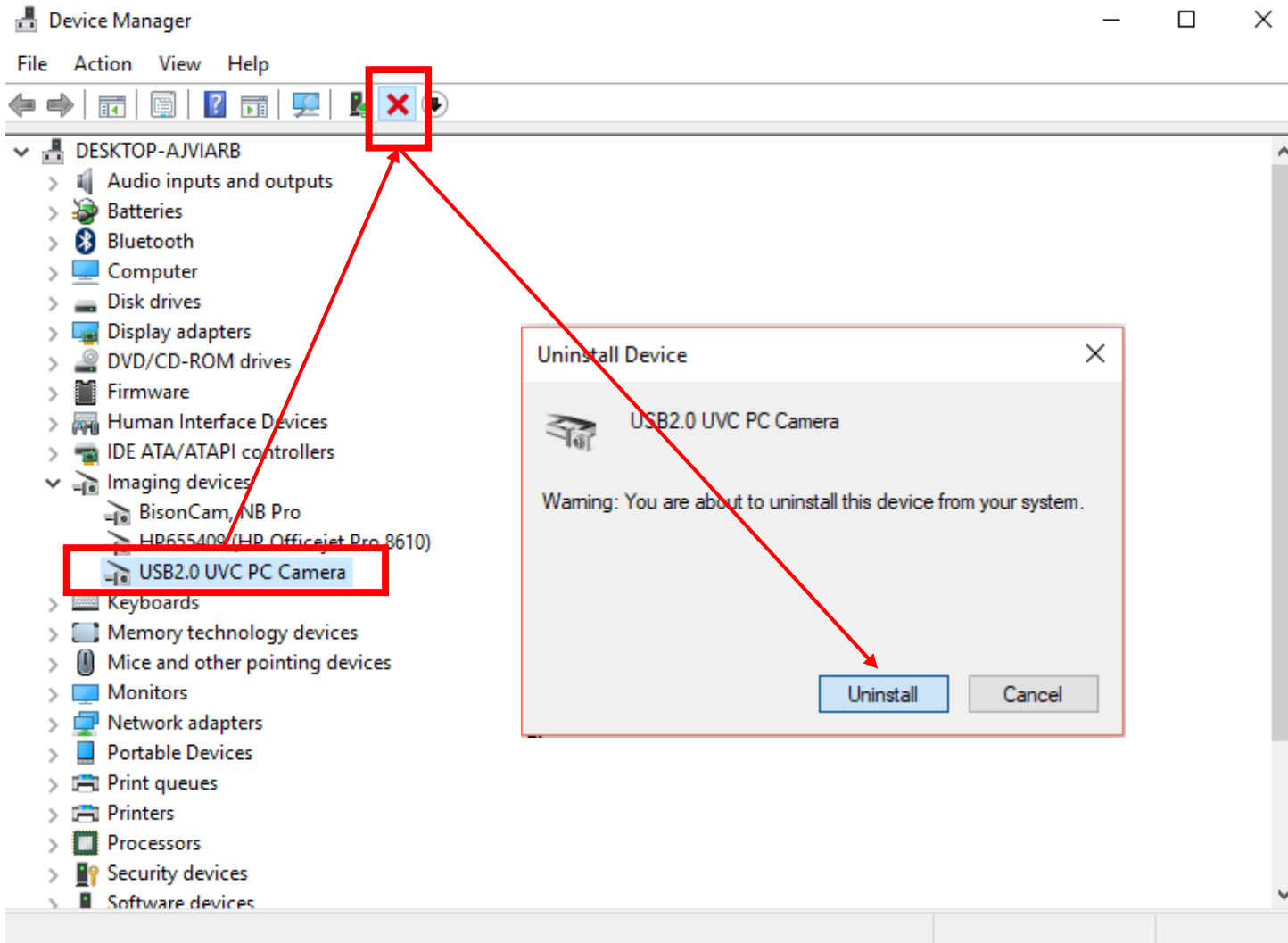
1. Find the Device Manger and click it



[Procedure]

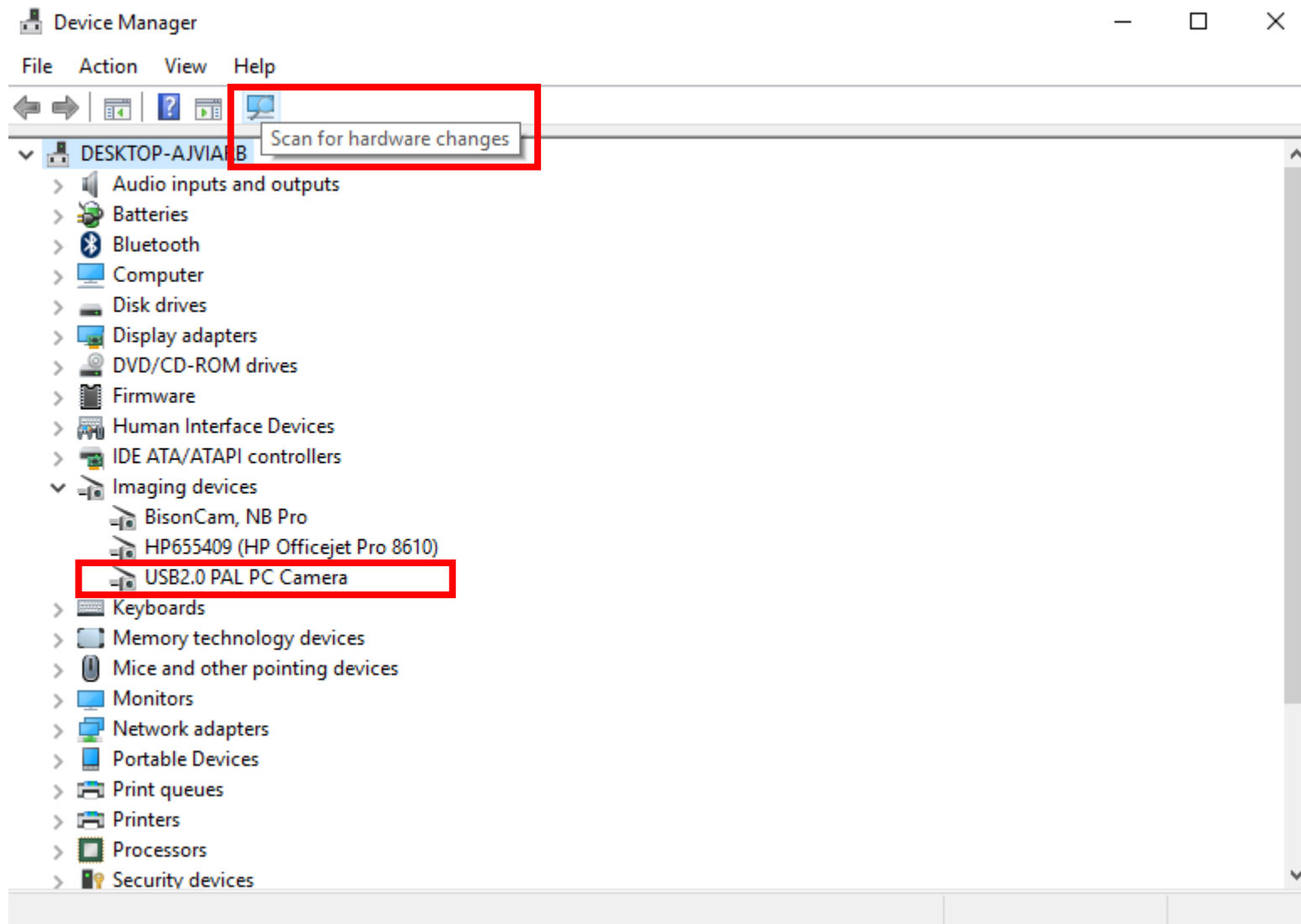
1. Find the 'Imaging devices'
2. Check the status of camera

('**USB2.0 UVC PC Camera**' means **NTSC** camera type is connected,
'**USB2.0 PAL PC Camera**' means **PAL** type camera is connected)



[Procedure]

1. If the type of camera is wrong with your camera, click the '**USB2.0 UVC PC Camera**' or '**USB2.0 UVC PC Camera**' and uninstall it



[Procedure]

1. After uninstall the '**USB2.0 UVC PC Camera**' or '**USB2.0 UVC PC Camera**', click the '**Scan for hardware changes**'
2. '**Scan for hardware changes**' will finds the connected Camera type automatically
3. Check the status of Camera type.